

## MRS75.16

### Diodes module

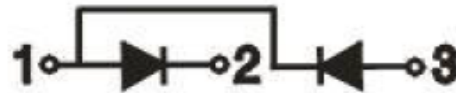
#### Features:

- International standard package
- Low forward voltage drop
- Isolation voltage 2500V ~
- Simple mounting
- UL recognized, file no. E312789



#### Typical applications:

- Various rectifier power
- AC/DC motor control
- Heater control
- Frequency converters



Symbol	Characteristics	Test Conditions	Value			Unit
			Min	Typ	Max	
$V_{RSM/DSM}$	Non-repetitive reverse/forward blocking voltage	$T_j = 25^\circ\text{C}$			1700	V
$V_{RRM/DRM}$	Repetitive reverse/forward blocking voltage	$T_j = 25^\circ\text{C}$			1600	V
$I_{F(AV)}$	Forward average current	180° half sine wave 50Hz $T_c = 100^\circ\text{C}$ (85°C)			75(90)	A
$I_{F(RMS)}$	Forward square root current	180° half sine wave 50Hz $T_c = 100^\circ\text{C}$			130	A
$I_{RRM}$ $I_{DRM}$	Repetitive peak current	at $V_{DRM}/V_{RRM}$ $T_j = 150^\circ\text{C}$			8	mA
$I_{FSM}$	Forward surge current	10ms half sine wave, $T_j = 45^\circ\text{C}$			2000	A
$I^2 t$	$I^2 t$ for fusing coordination	$V_R = 0.6 V_{RRM}$ , $T_j = 45^\circ\text{C}$			24400	A <sup>2</sup> s
$V_{FO}$	Threshold voltage	$T_j = 150^\circ\text{C}$			0.75	V
$r_T$	Forward slope resistance	$T_j = 150^\circ\text{C}$			2.00	mΩ
$V_{FM}$	Peak forward voltage	$T = 25^\circ\text{C}$ ; $I_T = 165\text{A}$	1.00		1.20	V
$R_{th(j-c)}$	Thermal resistance junction to case	Single side cooled per chip			0.40	°C/W
$R_{th(c-s)}$	Thermal resistance case to sink	Single side cooled per chip			0.20	°C/W
$V_{ISO}$	Isolation voltage	50Hz, RMS, $t = 1\text{min}$			2500	V
$F_M$	Mounting torque - copper plate (M6)		4		6	N·m
	Mounting torque - terminal (M5)		2.5		4.5	N·m
$T_{stg}$	Storage Temperature		-40		150	°C
$T_j$	Operating Temperature		-40		150	°C
$W_t$	Weight			120		g
Outline	M01-1					

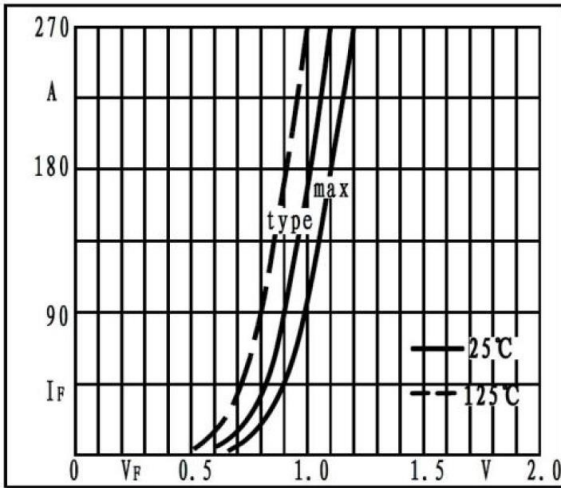


Fig1. Forward characteristics

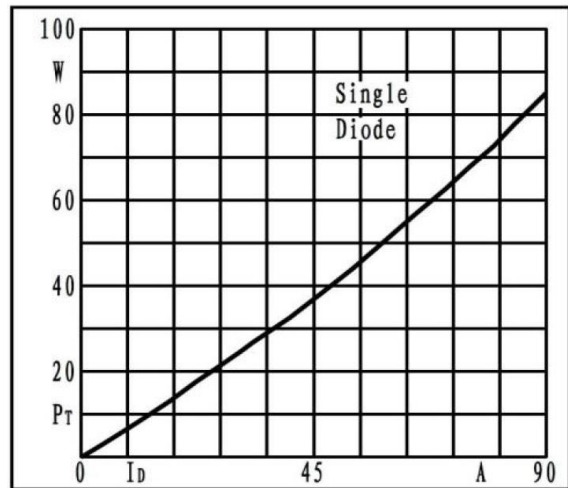


Fig2. Power dissipation

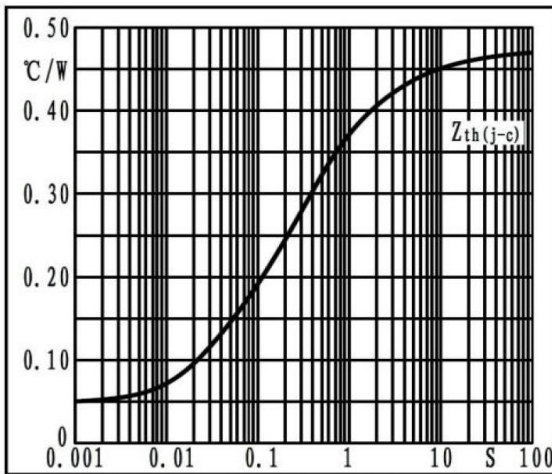


Fig3. Transient thermal impedance

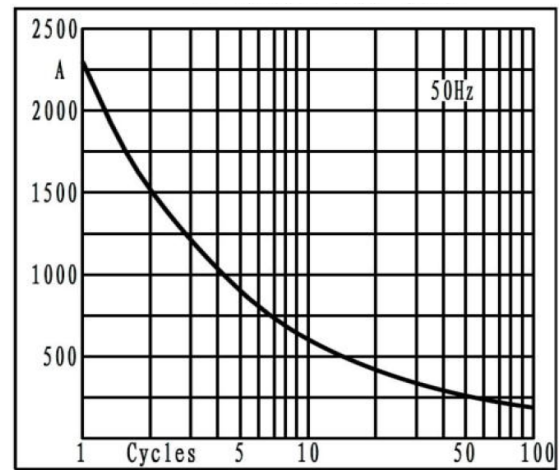


Fig4. Max non-repetitive forward surge current

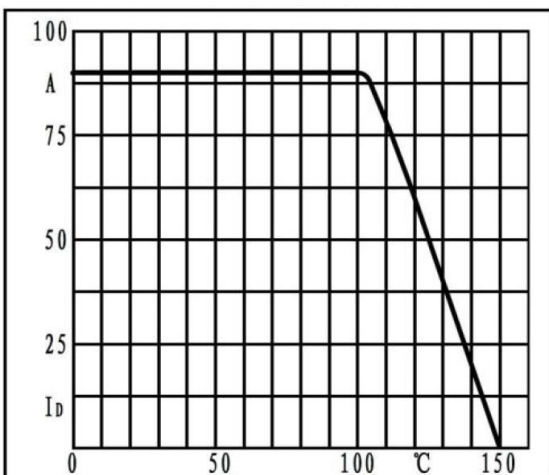
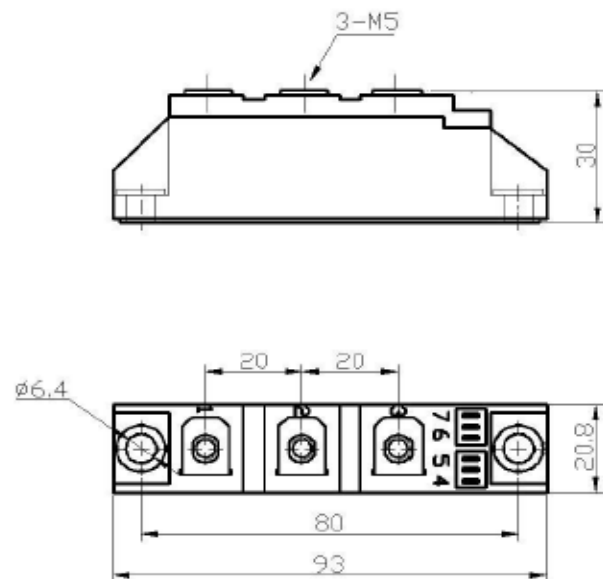


Fig5. Forward current derating curve



(dimensions in mm)

**S.CO.M.E.S. Srl**

Via Enrico Mattei, 6/8 - 26283 - Castiglione d'Adda (LO) - Italy

Phone: +39 0377 901243 Fax: +39 0377 900206

Scomes Srl reserves the right to change any specification without notice